

PART LIST

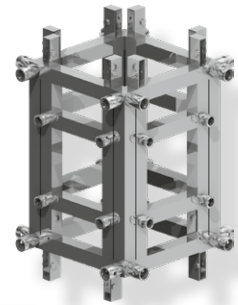
TGS BP	1 pcs
TGS SB	1 pcs
TT HS	4 pcs
TGS TS	1 pcs
TGS LO	4 pcs
TT44-100	1 pcs
TT44-200	4 pcs
TT44-300	1 pcs
TT SH2	1 pcs

SPECIFICATIONS

SELF WEIGHT	315kg (694,5lb)
HEIGHT	12m (39,4ft)
LOAD CAPACITY	2000kg (4409,2lb)

MAST SECTION TT44

MAIN TUBES	50x4mm (2x0,16")
BRACES	25x3mm (1x0,12")
ALLOY	EN-AW 6082 T6



TGS-SB-1

Sleeve block Tower 2 for TT74, TT54, FT44

TGS-SB-2

Sleeve block Tower 2 for TT74, TT54

TGS-SB-3

Sleeve block Tower 2 for TT54, FT44

TGS-SB-4

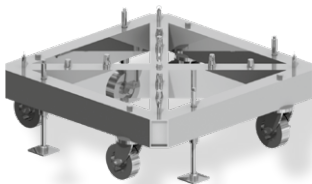
Sleeve block Tower 2 for TT74

TGS-SB-5

Sleeve block Tower 2 for TT54

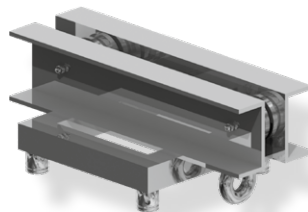
TGS-SB-6

Sleeve block Tower 2 for TT44



TG BP

Steel base plate



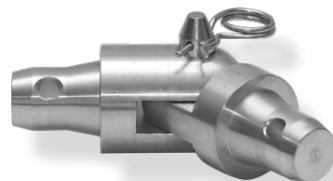
TG TS

Top section



TG LO

Long outrigger



TT HS

Hinge section